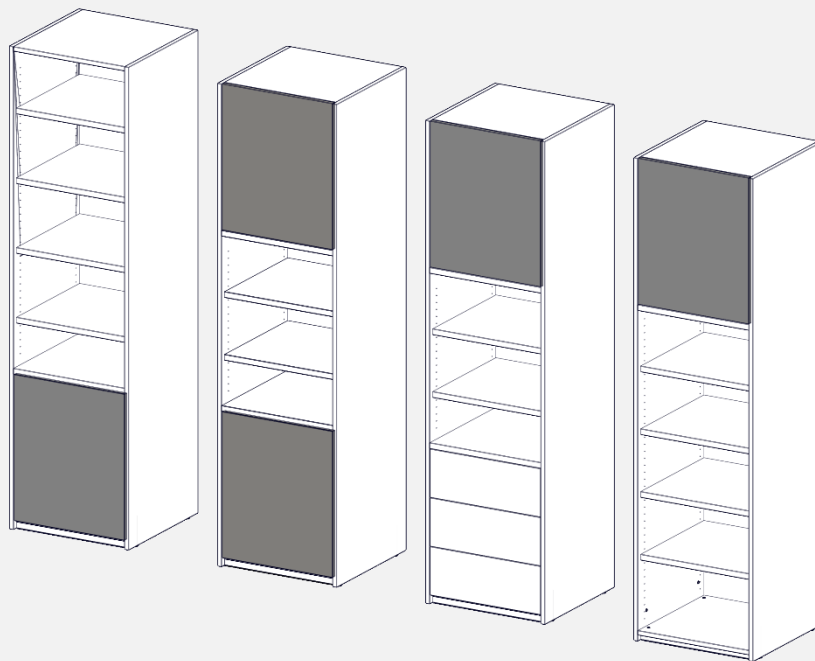
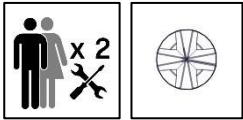


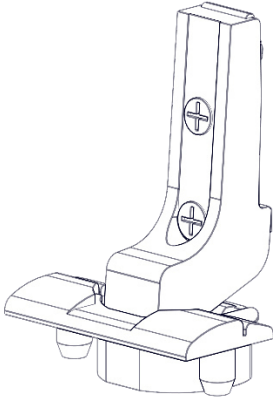
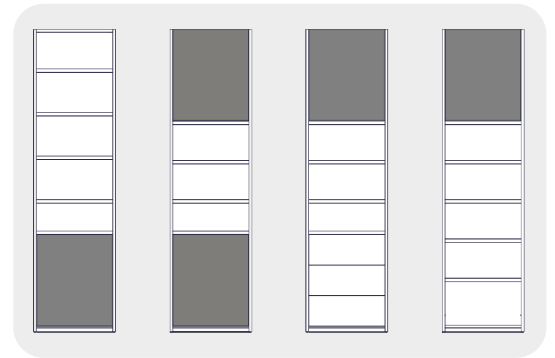
# Modular Plus - Tür

(Offene Elemente)  
Montage

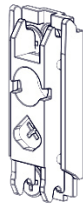




Beschläge für eine Tür  
Fittings for one door



BMB-0001  
x2



BVB-0022  
x2



BSCH-0073  
x2



ZDIV-0509



ZDIV-0512

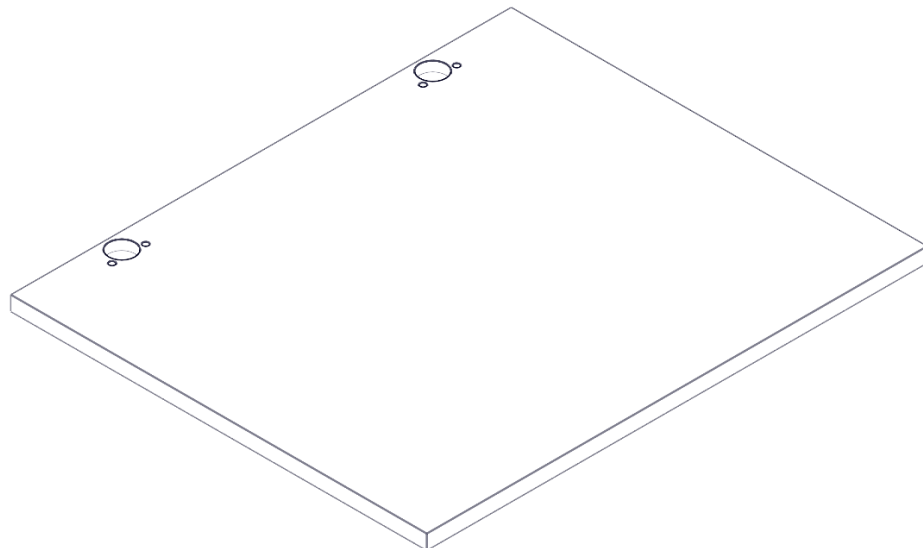


ZDIV-0511



BSCH-0053  
x2

\*Beschläge bei push-to-open-Funktion  
\*fittings for push-to-open function





# Modular Plus - Tür

1

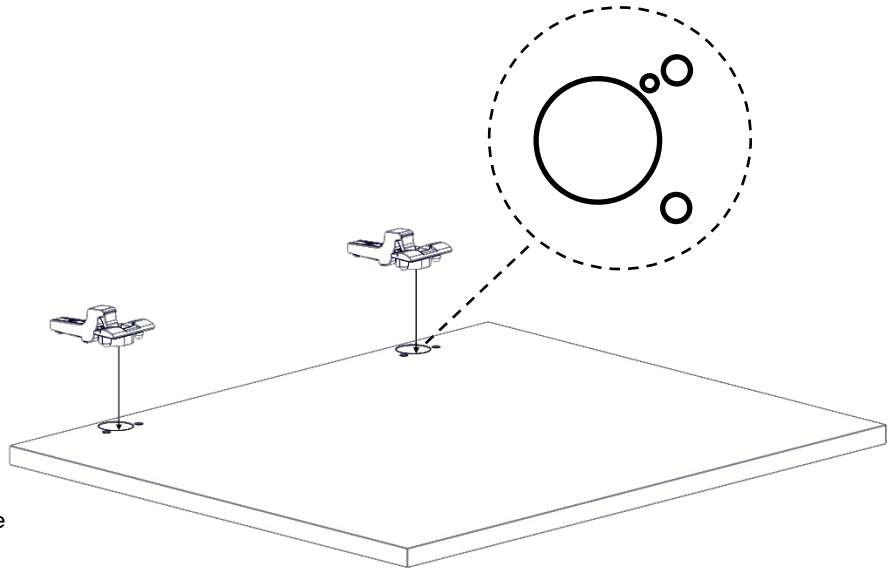


Deutsch

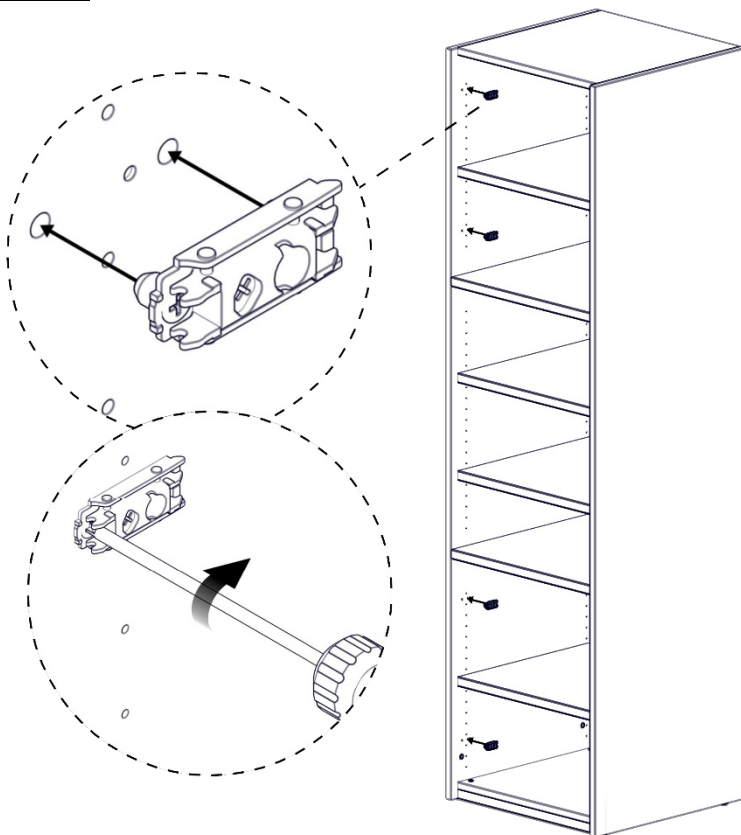
Die Türen müssen bei der Montage so gedreht werden, dass die markierte Bohrung an der obersten Montageplatte sitzt!!!

English

During assembly, the doors must be rotated so that the marked hole sits on the top mounting plate !!!



2



Deutsch

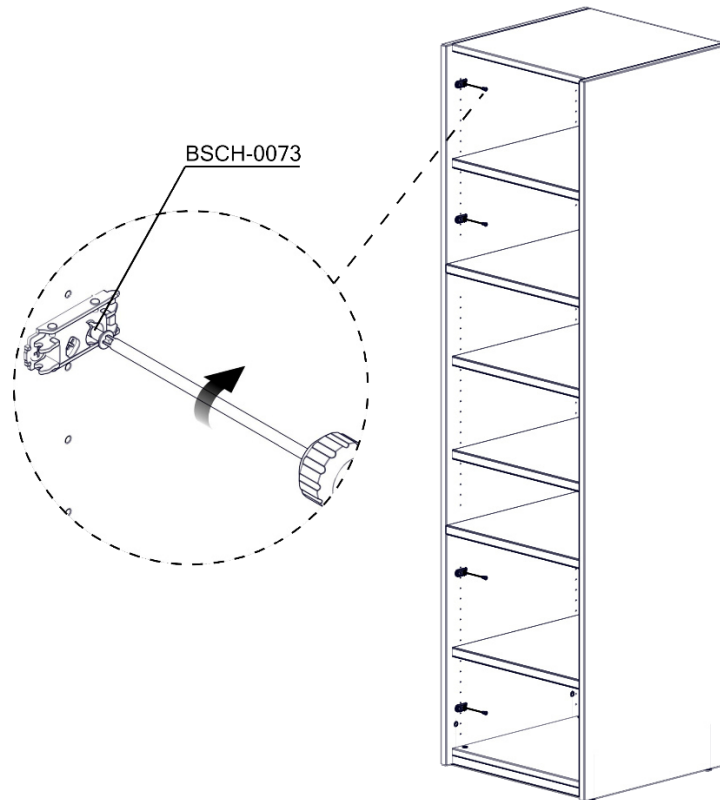
Es handelt sich hierbei um eine beispielhafte Darstellung. Die weiteren Schritte können ebenfalls für alle anderen Ausführungen angewendet werden.

English

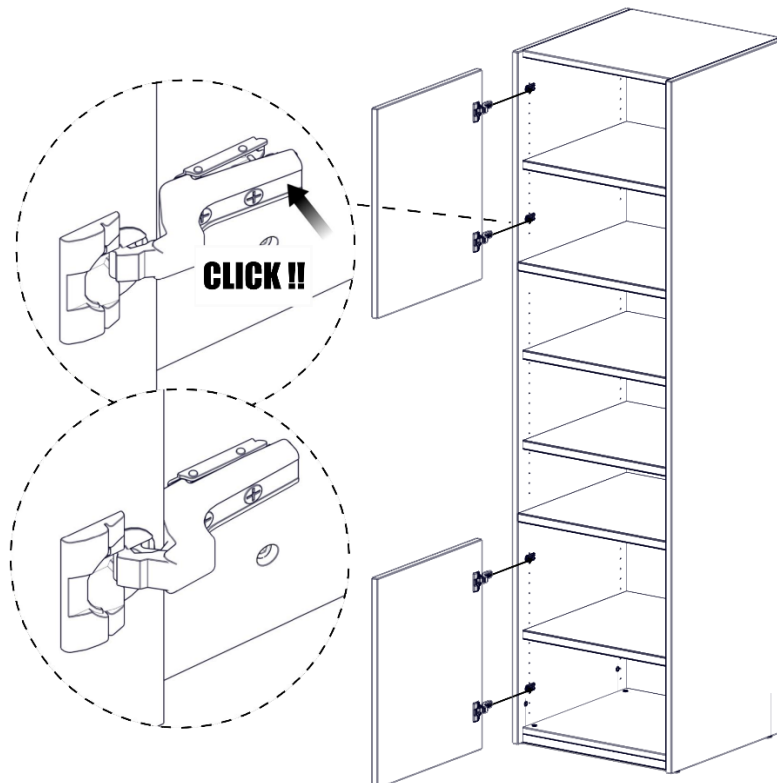
This is an exemplary illustration. The next steps can also be used for all other designs.



3



4

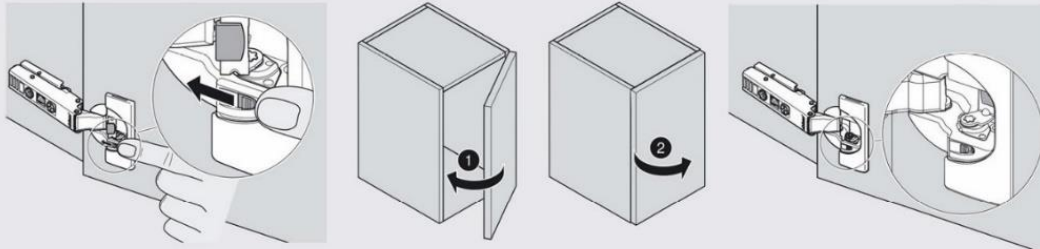




# Modular Plus – Tür

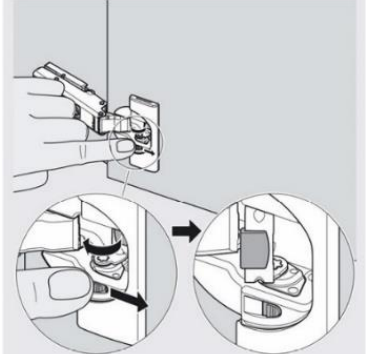
## Einstellungsmöglichkeiten der Beschläge Adjustment options for the fittings

Deaktivierung / Deactivation / Désactivation / Disattivazione / Desactivación

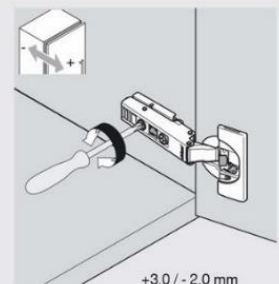
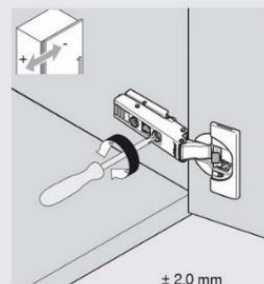
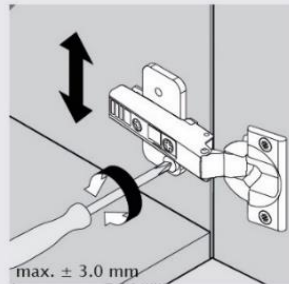
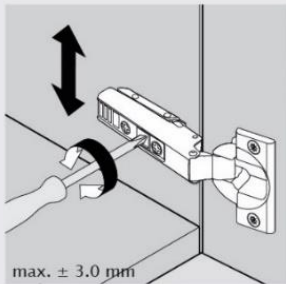


Deaktivierung einer BLUMOTION bei kleinen / leichten Fronten.  
Deactivation of BLUMOTION for small / light fronts  
Désactivation d'un BLUMOTION pour faces petites / légères  
Disattivazione di un BLUMOTION con ante piccole e/o leggere  
Desactivación de BLUMOTION con frentes pequeñas / levas

Aktivierung / Activation / Activation /  
Attivazione / Activación



Verstellung / Adjustment / Réglage / Regolazione / Ajuste



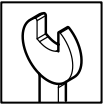
### Deutsch

Für detaillierte Hinweise zu den Einstellmöglichkeiten der Topfbänder, scannen Sie den QR-Code.

### English

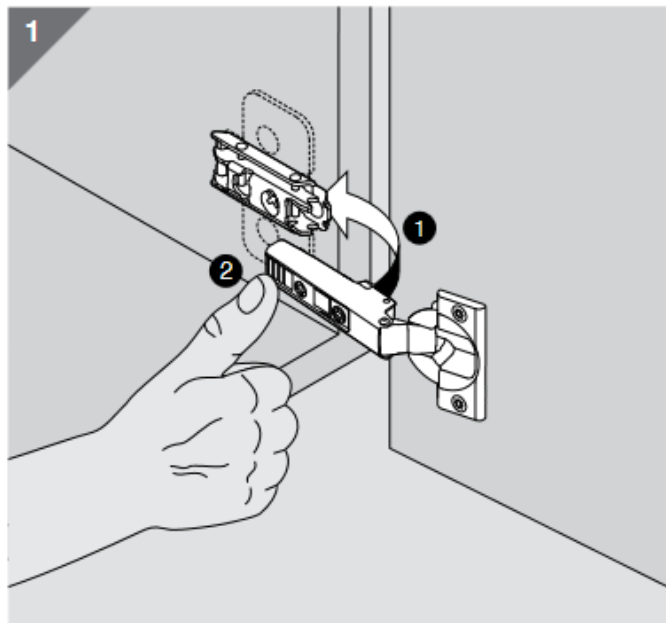
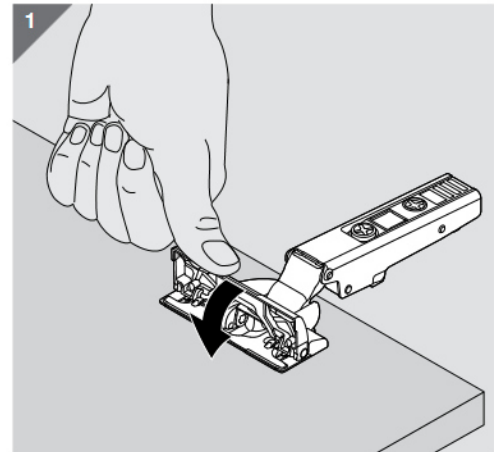
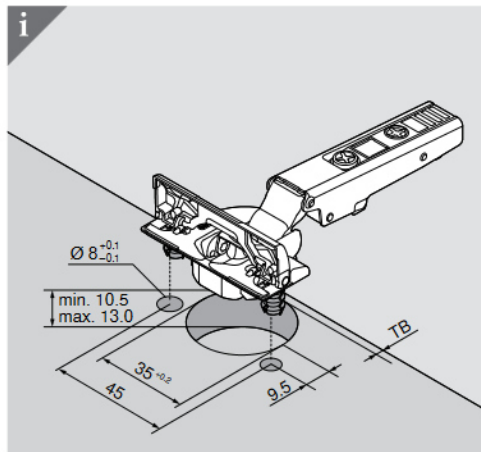
For detailed information on the setting options of the pot tapes, scan the QR Code.





## Montage des Scharniers

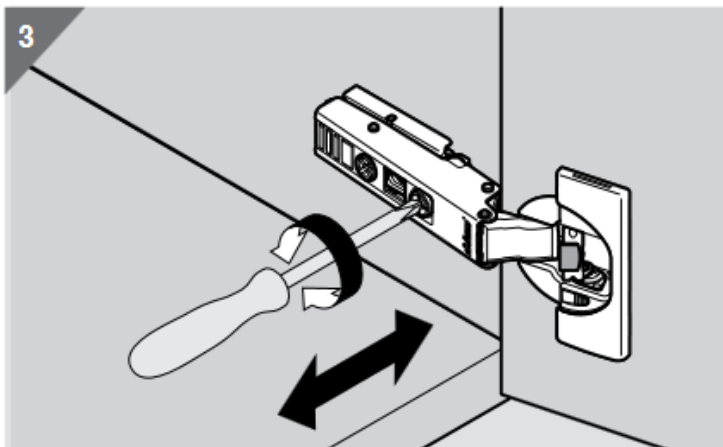
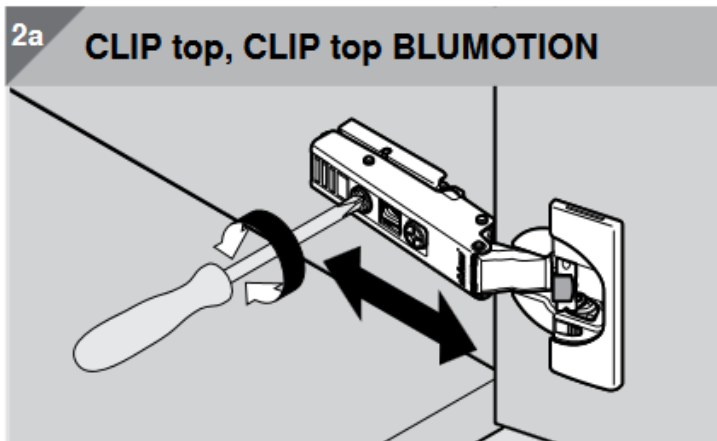
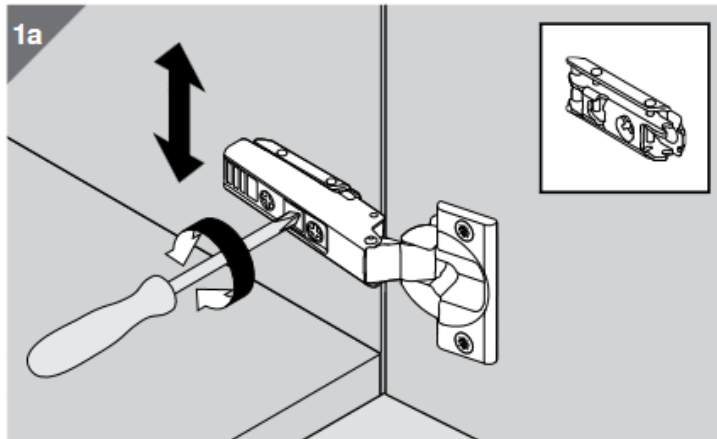
Mounting the hinge

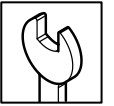




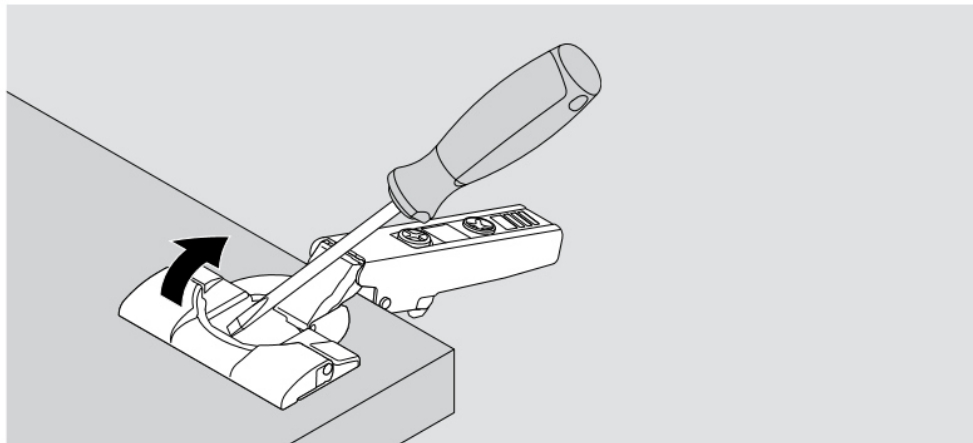
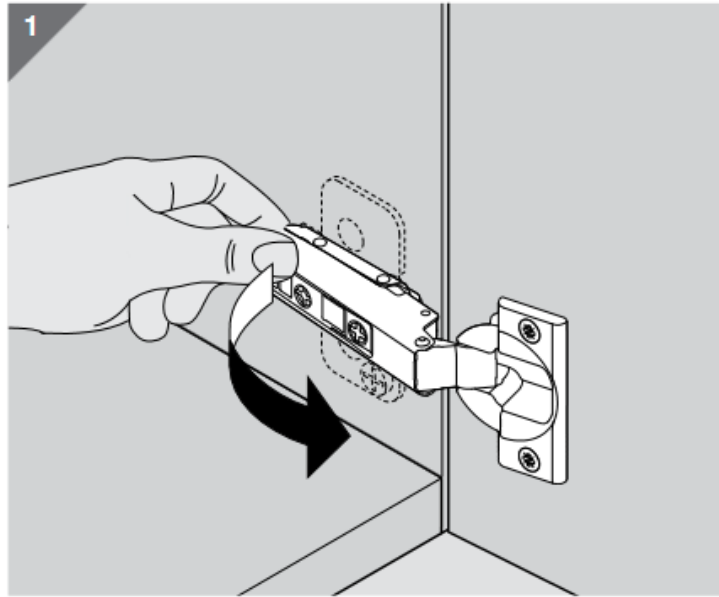
# Modular Plus - Tür

## Einstellung des Scharniers Adjusting the hinge





## Demontage des Scharniers Removing the hinge





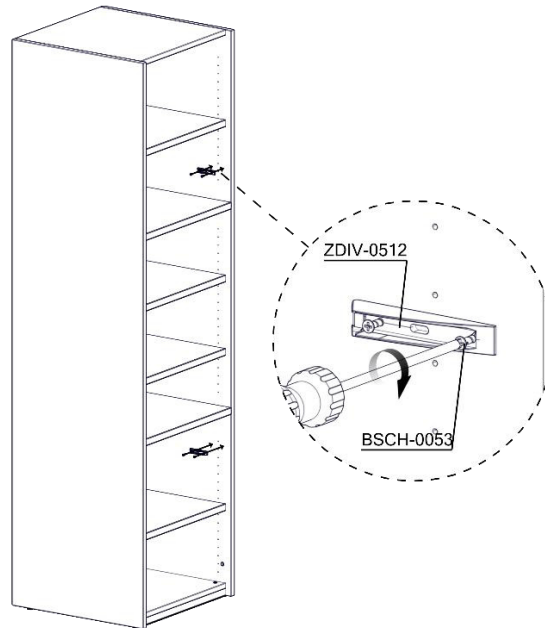


# Modular Plus - Tür

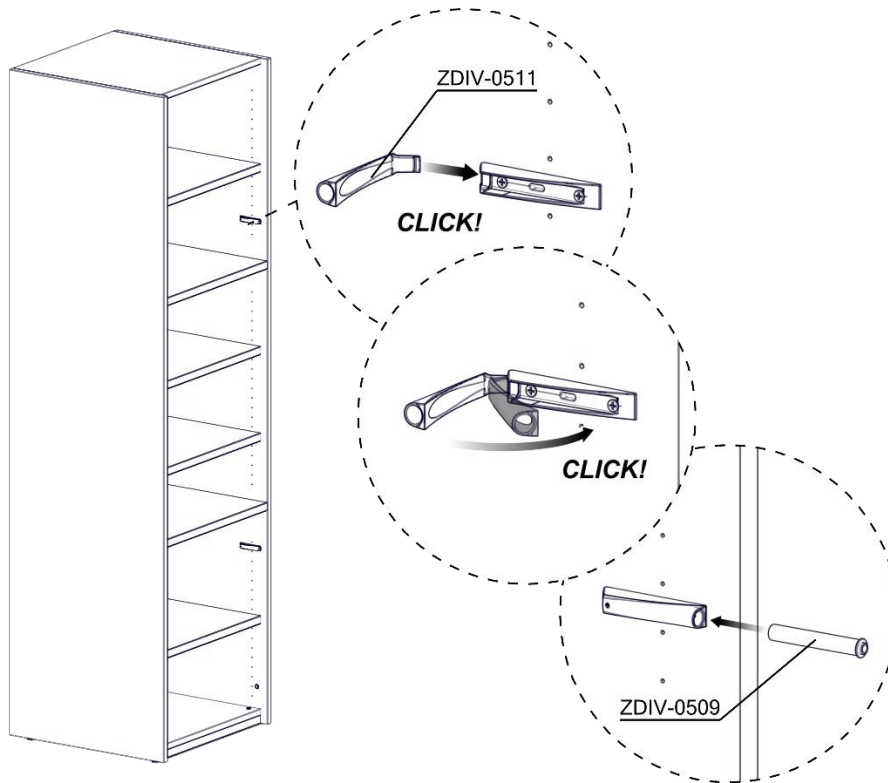
Nachfolgende Montageschritte bei Push-to-open Funktion notwendig  
The following installation steps are required for the push-to-open function

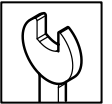


**5**



**6**





### Deutsch

Mit Hilfe des Auswerfers lässt sich der Türeinsprung in geschlossenem Zustand einstellen. In Richtung + kommt die Tür weiter nach vorne, mit der Richtung - springt sie weiter ein.

### English

The ejector can be used to adjust the door retraction when closed. In the + direction, the door moves further forward; in the - direction, it retracts further.

